

*Life begins at*

# Buckshaw Retirement Village

CHORLEY



## THE COURT

Independent Living - A Lifestyle For You

# THE FREEDOM TO ENJOY LIFE



## *Stress-free independent living*

You might have retired from work, but you haven't retired from life. If the idea of continuous home ownership, stress-free, low maintenance living in a highly exclusive village community appeals to you, then take a closer look at The Court - a private independent living community set within Buckshaw Retirement Village... a brand new community for the next best part of your life.

Here you will find distinctively-designed, stylish apartments - with the added benefit of no external maintenance, excellent on-site security and every possible convenience for your complete peace of mind...a place where neighbours become friends, where you can spend quality time doing what you enjoy and where you can live life to the full.

There's an excellent range of on-site facilities for you to enjoy and whether it's a glass of wine in the bar or a workout in the gym, there's plenty to whet your appetite for life, but if you just want peace and quiet, then that's taken care of too.

So, if retirement has given you more time to enjoy the freedom you've looked forward to, then take advantage of The Court - home ownership here offers you an opportunity to invest in your future and provides a thoroughly appealing way of life. We've taken care of the details, so you're free to enjoy that life... why not visit us to find out more.

### **Features & Benefits**

- Beautiful apartments with a choice of design
- Well-equipped gymnasium
- Hair and beauty salon
- Bowling green
- Exclusive licensed bistro
- Library and IT suite
- Convenience shop
- All grounds and external maintenance included
- 24-hour emergency response system
- Excellent safety and security features
- On-site domiciliary care and support available if required
- Laundry and housekeeping service available if required





# TIME TO RELAX, TIME TO ENJOY...



## *A Village Home*

We have designed The Court to make your life as carefree as possible, with a good choice of well-designed apartment types, allowing you to create a space that is uniquely yours.

Available to purchase, these superb one and two-bedroom apartments are built to the highest possible specifications. Their impressive features offer a combination of luxury, comfort and convenience that will appeal to even the most discerning buyer.

Offering you total independence and complete privacy, these exclusive properties provide all the pleasures and benefits of home ownership, with the added privileges of low maintenance and a safe village setting.

## *At Your Leisure*

Take advantage of the facilities and amenities that help to create a real sense of community...

There's the elegant bistro and bar, ideal for anything from Sunday lunch with the family to a nightcap with neighbours, a well-equipped gymnasium, professional hair and beauty salon, well-stocked library, IT suite, convenient Village shop, comfortable lounge, bowling green and beautiful gardens – it's all here and more.

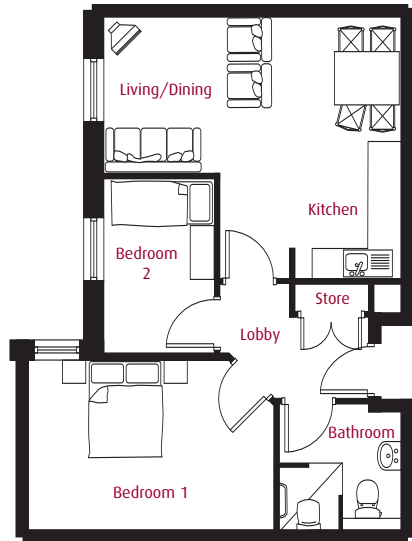
Stepping outside of the Village, there's even more to entice you with golf courses, cycle paths and woodland walks, only a stone's throw from your front door. There's also good shopping and large supermarkets, lovely restaurants and inviting country pubs, all within a short distance.

## *Peace of Mind*

We've created a community where your security and safety are paramount and therefore provide a range of state-of-the-art facilities and services to provide peace of mind, whether you're home or away.

These include CCTV to all external areas, CCTV door entry system, the latest fire detection and sprinkler system, 24-hour emergency call system, fully staffed reception area, the services of your Scheme Manager and last, but by no means least, there's also the vigilance of like-minded neighbours.

# TYPICAL APARTMENT TYPES



## THE SYCAMORE

### Living/Dining/Kitchen

5.89 x 5.18 (max) (19'4" x 16'11")

### Bathroom

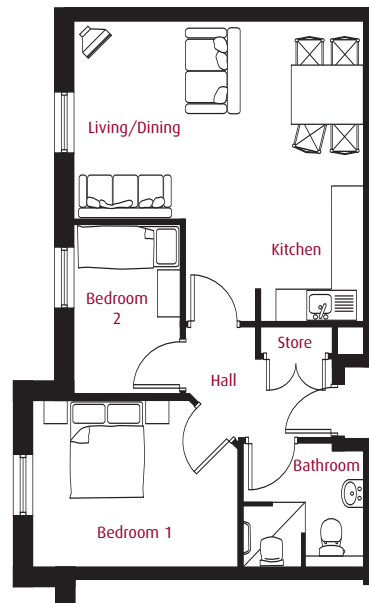
2.37 x 2.27 (7'9" x 7'5")

### Bedroom 1

4.82 x 3.37 (15'10" x 11'0")

### Bedroom 2

2.23 x 3.43 (7'3" x 11'3")



## THE PINE

### Living/Dining/Kitchen

5.88 x 5.64 (max) (19'3" x 18'6")

### Bathroom

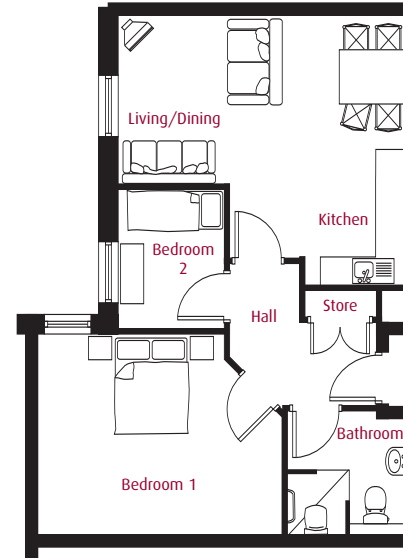
2.37 x 2.27 (7'9" x 7'5")

### Bedroom 1

4.17 x 3.38 (13'8" x 11'1")

### Bedroom 2

2.22 x 3.41 (7'3" x 11'2")



## THE POPLAR

### Living/Dining/Kitchen

5.88 x 5.28 (max) (19'3" x 17'3")

### Bathroom

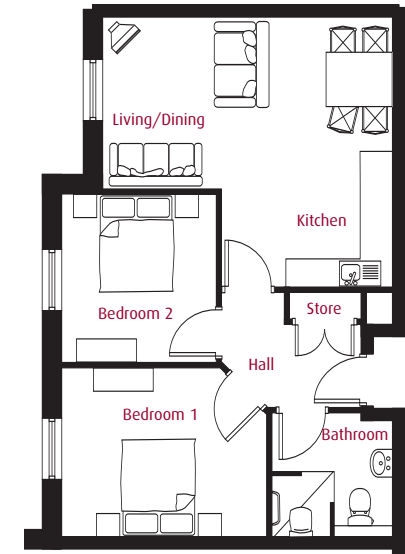
2.37 x 2.29 (7'9" x 7'6")

### Bedroom 1

4.82 x 4.06 (15'10" x 13'3")

### Bedroom 2

2.22 x 2.77 (7'3" x 9'1")



## THE HAWTHORN

### Living/Dining/Kitchen

5.88 x 5.46 (max) (19'3" x 17'10")

### Bathroom

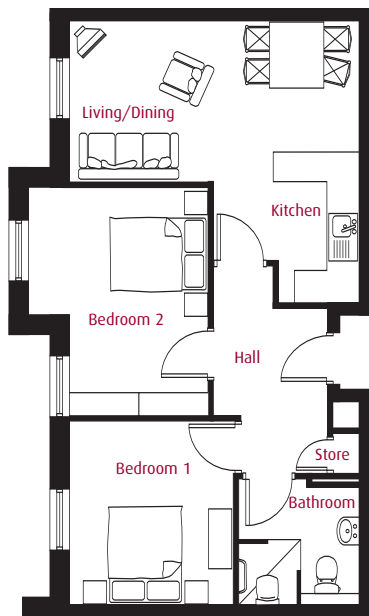
2.37 x 2.27 (7'9" x 7'5")

### Bedroom 1

4.17 x 3.37 (13'8" x 11'1")

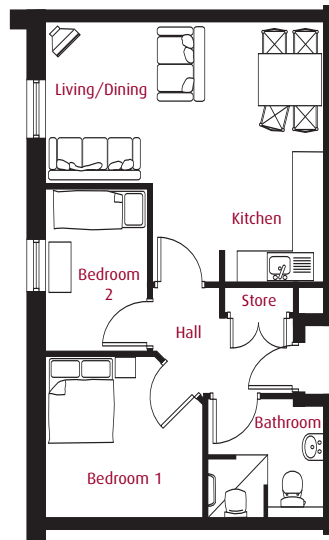
### Bedroom 2

3.16 x 3.42 (10'4" x 11'2")



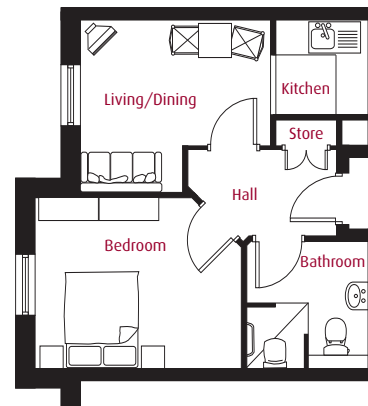
### THE CHERRY

**Living/Dining/Kitchen**  
 5.88 x 5.61 (max) (19'3" x 18'4")  
**Bathroom**  
 2.39 x 2.50 (7'10" x 8'2")  
**Bedroom 1**  
 3.40 x 3.68 (11'1" x 12'1")  
**Bedroom 2**  
 3.70 x 4.56 (12'1" x 14'11")



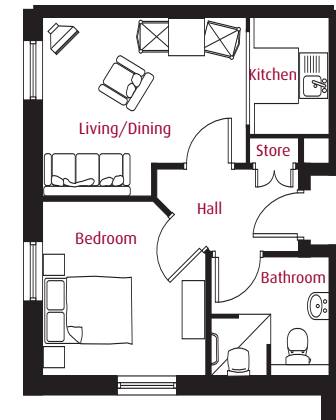
### THE ELM

**Living/Dining/Kitchen**  
 5.88 x 5.38 (max) (19'3" x 17'7")  
**Bathroom**  
 2.37 x 2.29 (7'9" x 7'6")  
**Bedroom 1**  
 3.38 x 3.39 (11'1" x 11'1")  
**Bedroom 2**  
 3.35 x 2.22 (10'11" x 7'3")



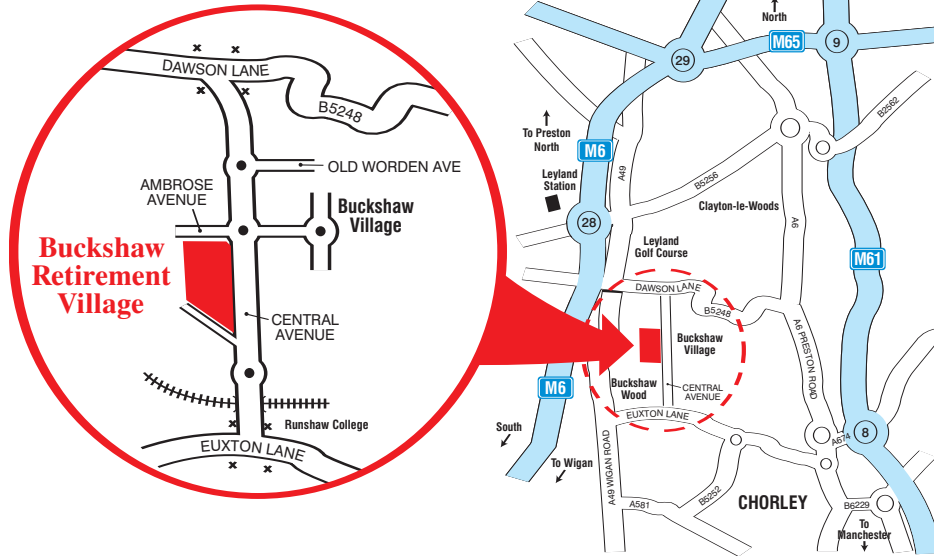
### THE YEWS

**Living/Dining/Kitchen**  
 5.77 x 3.48 (max) (18'11" x 11'5")  
**Bathroom**  
 2.40 x 2.49 (7'10" x 8'2")  
**Bedroom**  
 4.15 x 3.38 (13'7" x 11'1")



### THE HOLLY

**Living/Dining/Kitchen**  
 5.79 x 3.65 (max) (19'0" x 11'11")  
**Bathroom**  
 2.38 x 2.44 (7'9" x 8'0")  
**Bedroom**  
 3.39 x 3.61 (11'1" x 11'10")



## WHERE TO FIND US

Without doubt, a visit to Buckshaw Retirement Village is the only way you will truly appreciate what we have to offer, so what are you waiting for...

Located within the village of Buckshaw, we are perfectly located for access to all of the North West. By road, we are close to the A6, between the M6 (junction 28) and M61 (junction 8) motorways, with easy access to the M55, M65 and M62.

We're also only two miles from Chorley and Leyland, around 10 miles from Preston city centre, 11 miles from Blackburn, 17 miles from Bolton and less than 30 miles from Manchester.

Excellent rail connections are also available from Buckshaw to nearby Leyland, with plans underway for a new railway station that will provide a direct service onto the Preston-Manchester (and Manchester Airport) line.



**Marketing Suite open daily 10am - 5pm**

**For more information on Buckshaw Retirement Village call us on Freephone 0845 094 50 50**



11 Marina Court, Castle Street, Hull HU1 1TX. Tel: 01482 210786. Fax: 01482 210936  
[www.oakbridgeretirementvillages.co.uk](http://www.oakbridgeretirementvillages.co.uk)

The Property Misdescription Act 1991

This brochure is intended as a sales aid and guide to Buckshaw Retirement Village (the development). The accuracy of any visual image, measurement, depiction of environment, plot position and home layout should be confirmed with the Sales Office on site or through your solicitor. Purchasers or prospective purchasers (whether or not they enter into a contract to purchase a home within the development) should not rely upon anything printed in this brochure or orally indicated by sales staff as forming any part of any contract to purchase a home. Details and features may, vary from time to time. All photography in this brochure is indicative of the local area and does not represent the specific site surroundings or aspect. Interior photography shows similar developments, floorplans, maps and computer generated imagery is for illustrative purposes only and may be subject to change.

Oakbridge Retirement Villages LLP is a Limited Liability Partnership. Registered in England & Wales. Reg Number: 0C309899. Registered Address: Anchor Court, Francis Street, Freetown Way, Hull HU2 8DT